

Migrant Workers Colabs

Towards a Better Singapore for All

THE SERIES

A coming together of the public, people, and private sectors:

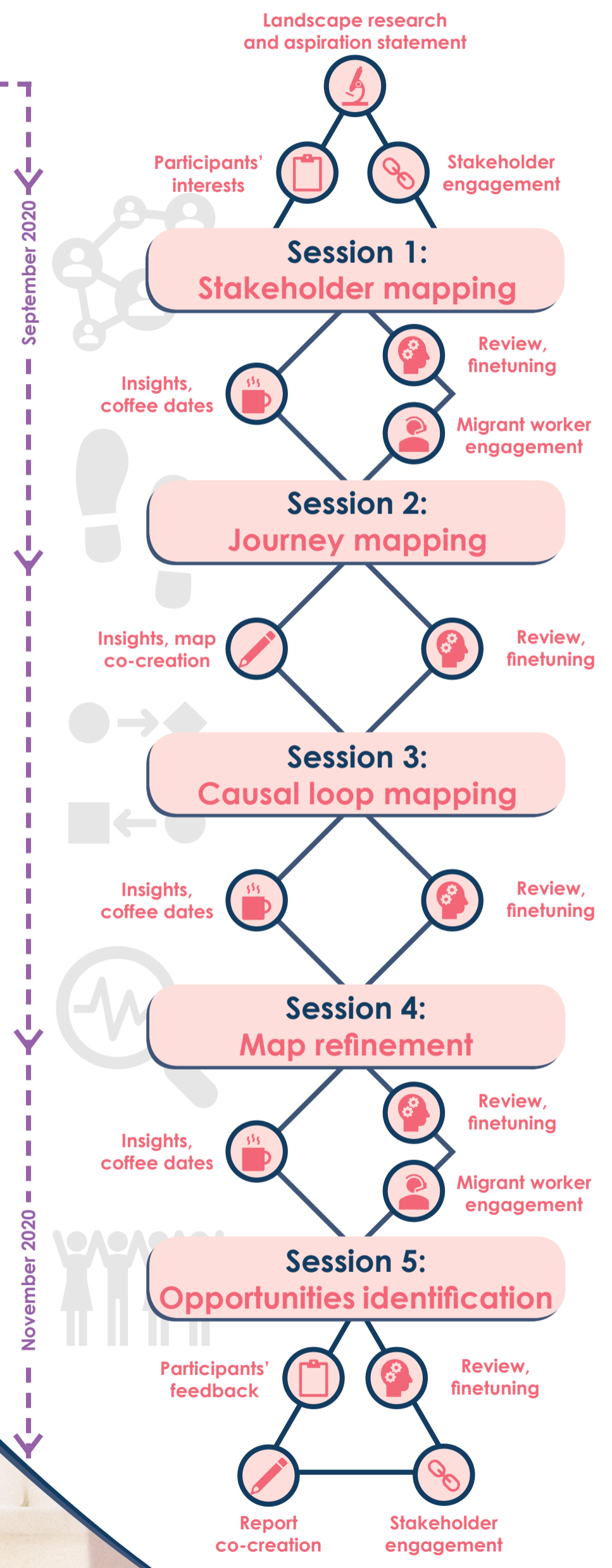
- To grow in empathy for migrant workers and each other
- To deepen our understanding of the complex interconnections between issues
- To build community and act together to build upon our good foundations

OUR STAKEHOLDERS

Intensive engagement with **105** unique individuals

including **15** migrant workers from **53** different organisations

- Government agencies
- Trade associations and chambers
- Dormitory operators
- Businesses employing migrant workers
- Non profit organisations / groundups
- Foundations
- Religious groups
- Private corporations providing services
- Recruitment agencies
- Academic researchers



Special thanks to ThinkPlace Singapore for partnering NVPC on the Migrant Workers Colabs series

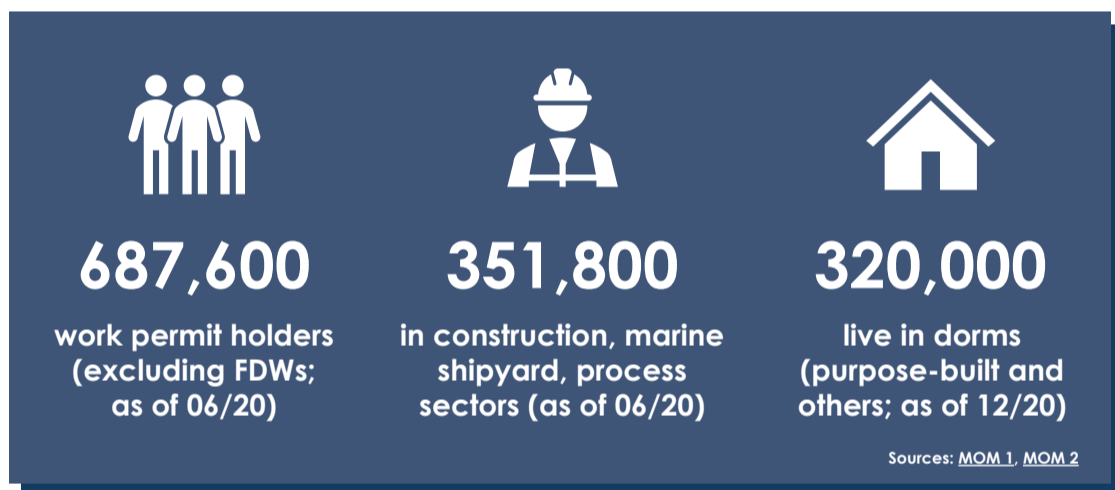


OUR ASPIRATION STATEMENT

How do we improve the quality of life of migrant workers for a better Singapore for all?

SETTING THE SCENE

Latest numbers



Good foundations

Comprehensive regulatory landscape

- Including the:
- Employment act
 - Employment of foreign manpower (work passes) regulations
 - Employment agencies act
 - Foreign employee dormitories act
 - Work injury compensation act

Groundswell of support during Covid-19

- Including:
- Inter-agency taskforce
 - Support by employers, dorm operators
 - Efforts by NPOs and Groundups like AGWO, Covid-19 Migrant Support Coalition, HealthServe, HOME, MWC, Psychosocial Support Community, SDI Academy, WIMBY, and more!

OUR SERIES LEARNINGS

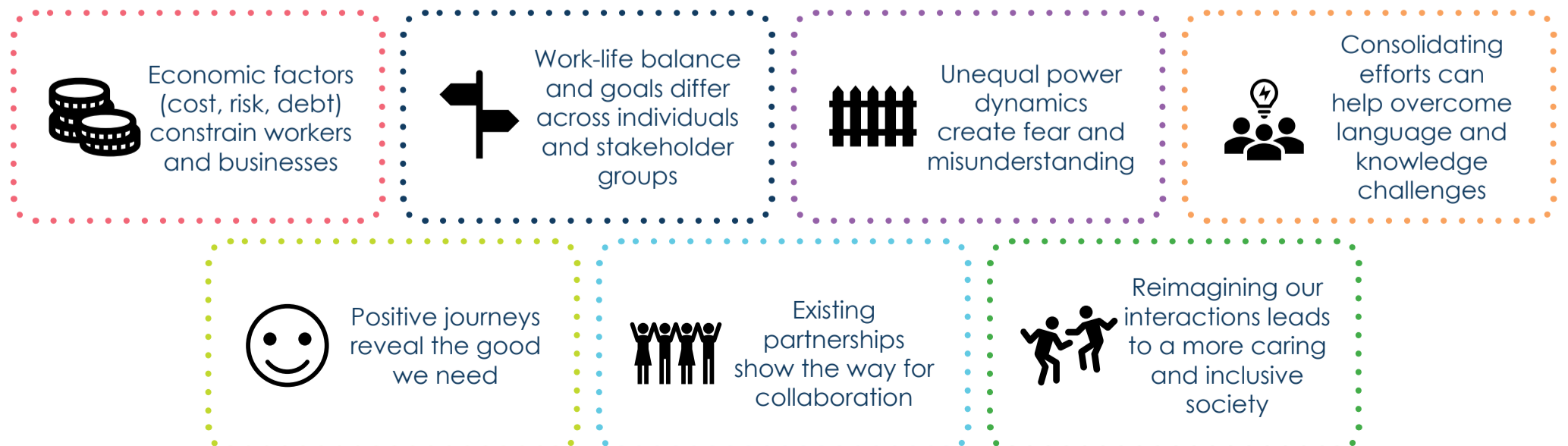
TWO DRIVING FORCES

➤ **Balance =**

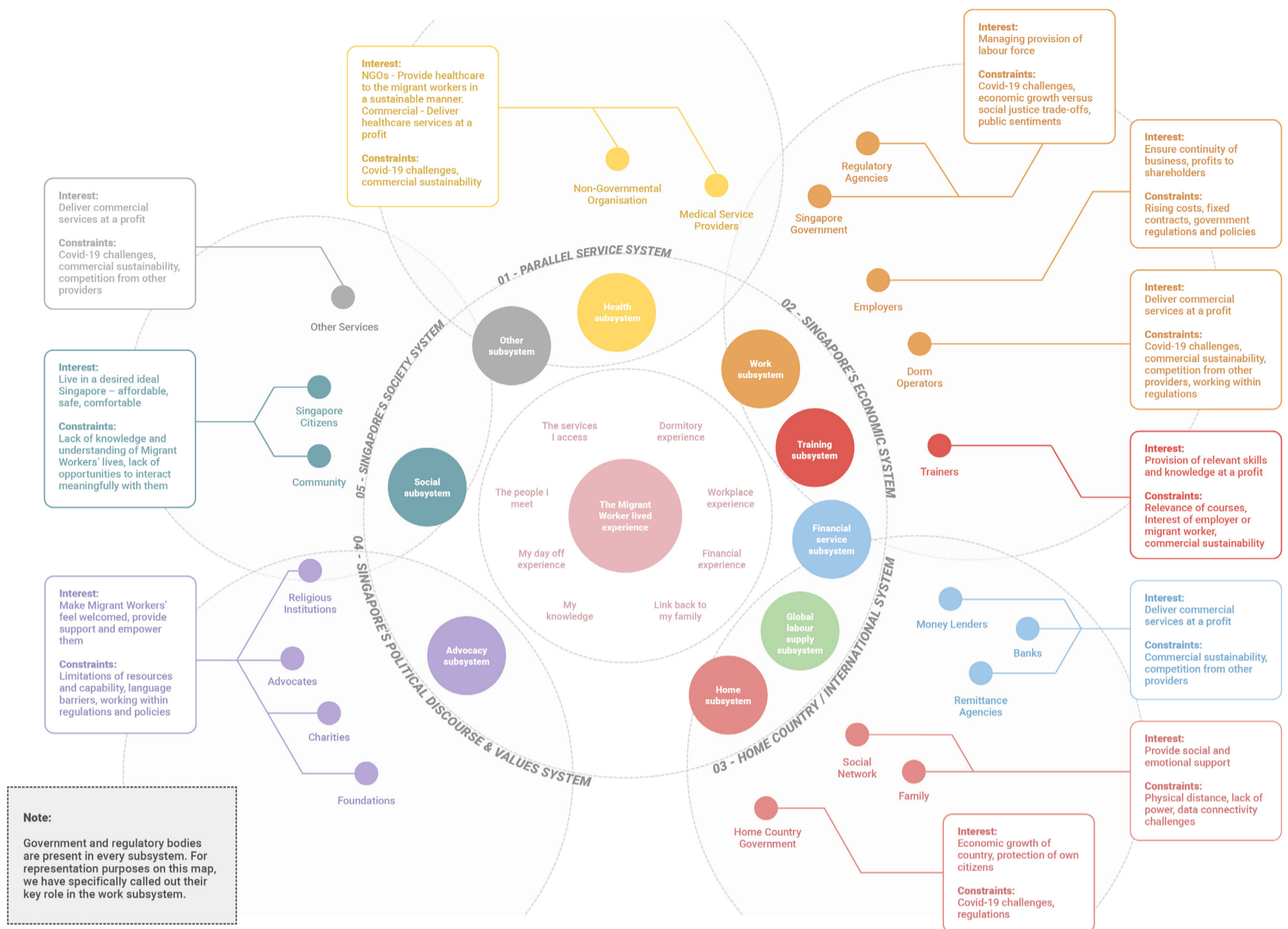
Individuals and stakeholder groups often aim for completely opposing directions. Balanced approaches are hard to achieve.

➤ **Divergence =**

Each person and organisation goes on their own journeys and pathways. We cannot make generalisations about anyone.



COMPLEX LINKS BETWEEN STAKEHOLDERS



AREAS OF OPPORTUNITY

Innovating collaboratively around the labour supply model

Supporting workers to build a better future in return for their service

Empowering workers with accessible information

Ensuring workers can lead a decent life with dignity in Singapore

Finding a place for workers in Singapore's collective story/society

GET STARTED

Amplify existing efforts and best practices, like:

- [ASPRI-Westlite Dormitory-Papan](#);
- [Project Dawn](#) by MOM/IMH/HealthServe/MWC

Build greater awareness of the migrant worker space

- Share this infographic and our upcoming full Report, which includes a list of resources

Collaborate on efforts for a better Singapore for all

- Email connect@colabs.sg;
- Post/find opportunities on [Collaborate for Good](#)